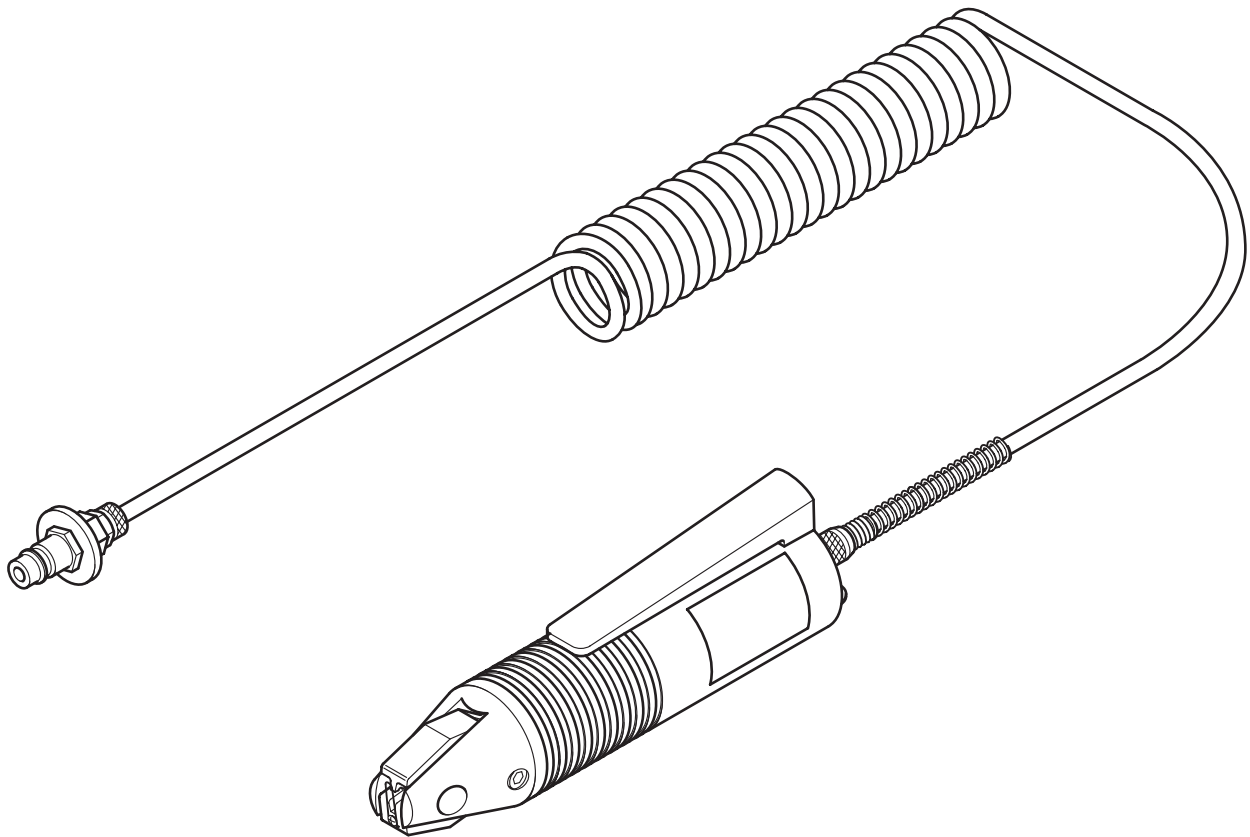




**AMERICAN
ELECTRICAL, INC.**

INDUSTRIAL ELECTRICAL ACCESSORIES

PNEUMATIC CRIMPER



**PC 24-14H
OPERATING MANUAL**

CE

SAFETY

BASIC INFORMATION1
SYMBOLS1
OPERATION OF MACHINE & POSSIBLE DANGERS1
DESIGNATED USE2
DANGERS2
PLACES FOR USE2
SAFETY DEVICES2
AUTHORIZED USER3
WARRANTY3

DESCRIPTION

APPLICATION4
COMPONENTS4
ACCESSORIES4

OPERATION

PREPERATION5

MAINTENANCE

CLEANING6
LUBRICATION6

SPARE PARTS7

TECHNICAL DATA8

PC 24-14H DESCRIPTION

Basic Information

The basic condition for safe use and proper operation of the PC 24-14H is knowledge and attention to the safety details.

Important for Your Safety

The following safety information must be observed by all people who will work with the PC 24-14H.

All rules and instructions in the work place must be observed.

Symbols

This operating manual contains the following symbols:



Marks a special safety note.



Marks a special operating note.

Operation of Machine & Possible Danger

The PC 24-14H complies with relevant safety standards and was subjected to a security check.

The PC 24-14H must be used only:

- For dedicated ferrule crimping
- In safe proper working condition

All persons commissioning, operating and maintaining the PC 24-14H must be:

- Appropriately qualified
- Consult this manual for its correct use

PC 24-14H DESCRIPTION

Designated Use

Use the PC 24-14H only for crimping of wire ferrules for stranded wires.

Wire ferrules with cross-sections or wire sized ranging from 0.5 to 2.5 mm² or 24-14 AWG.

Never insert solid metal parts or similar objects. This will damage the die set.

Third party reconstruction and changes of the PC 24-14H beyond retooling are not allowed due to safety violations!

Dangers

The PC 24-14H must only be operated with the finger guard in place.

Only use filtered compressed air with a maximum pressure of 6 bar.

Before carrying out any work (maintenance), during breaks and when the device is not in use disconnect from air source. Do **not** pull the compressed air tubing to disconnect.

Places for Use

Avoid operation in:

- Damp or dusty locations
- Location exposed to high or low temperatures or direct sunlight (operating range: 15 °C to 35 °C).

Protect the compressed air tubing from heat, oil and sharp edges.

Safety Devices

The PC 24-14H has a finger guard at the front as a contact safety device. Under no circumstances should this be removed.

The PC 24-14H is “off” when disconnected from the compressed air supply.

PC 24-14H DESCRIPTION

Authorized User

Only authorized and instructed users are allowed to work with the PC 24-14H.

The user has a responsibility to all people operating the PC 24-14H.

We ask our customers to:

- Make the operating manual accessible to the user
- Assure that the user has read and understood the manual

Warranty

In general, our common terms of sale and delivery are valid.

Warranty is void if any of the following situations occur:

- Improper usage of the PC 24-14H
- Improper places for use
- Inappropriate use and use beyond those described in the operating manual
- Any reconstruction of the PC 24-14H
- Continued use of the PC 24-14H when faults are recognized
- Unauthorized repairs

! Only use original spare parts.

PC 24-14H DESCRIPTION

Application

The PC 24-14H is a pneumatic crimping tool for wire-end ferrules with a cross-section of between 0.25 and 2.5 mm².

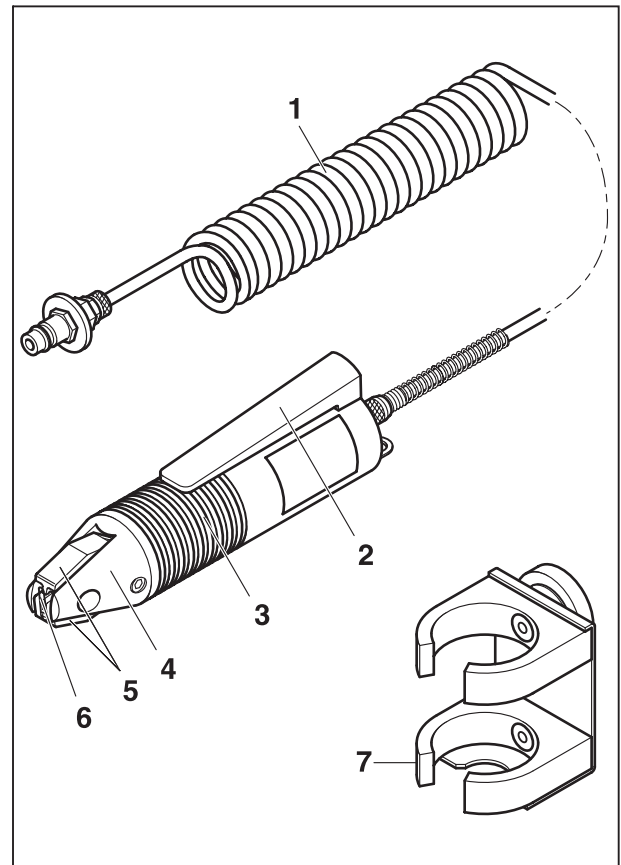
The PC 24-14H consists of a tabletop unit and a foot-operated pedal.

Components

- 1 Compressed air tubing
- 2 Lever
- 3 Body
- 4 Head
- 5 Die set
- 6 Finger guard

Accessories

- 7 Magnetic holder



PC 24-14H OPERATION

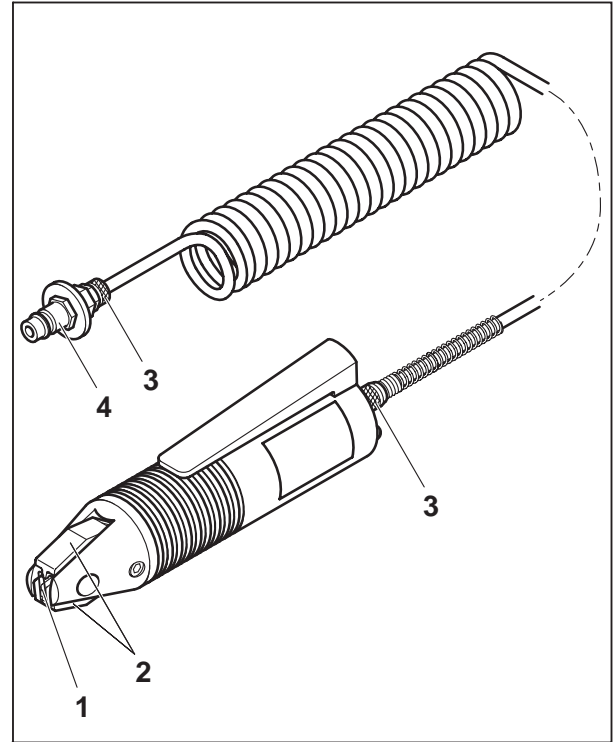
Preparation

- Ensure finger guard (1) is present and attached
- Check the die set (2) for foreign objects.
- Make certain the pneumatic tubing nuts (3) are tightened firmly.
- Check the compressed-air supply



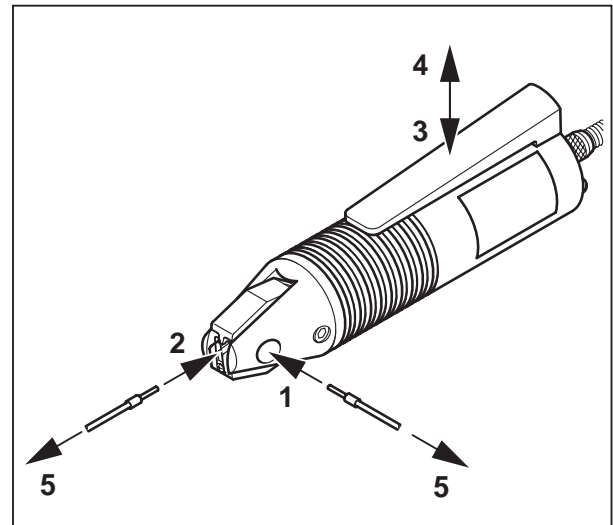
min. 4 bar, max. 6 bar filtered air.

- Connect the free connection (4) to the compressed-air supply.



Operation

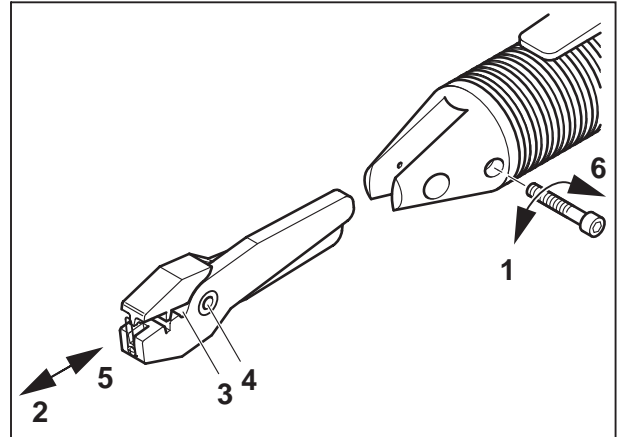
- Introduce stripped wire with wire-end ferrules already fitted, at the side (1) or from the front (2).
- Press the lever (3), the crimping process will begin.
- Release the lever (4), the crimped wire can be removed (5).



PC 24-14H MAINTENACE

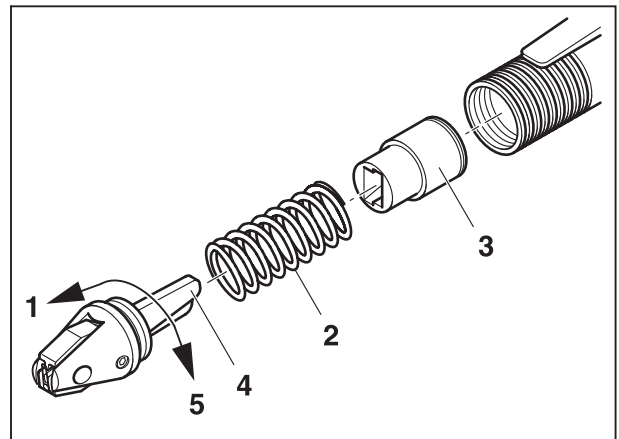
Cleaning

- Unscrew hexagon socket screw (1).
- Pull out the die set (2).
- Clean die set (3) and lightly oil pivot (4).
- Push in die set (5).
- Tighten hexagon socket screw (6).



Lubrication

- Unscrew the head (1).
- Remove the spring (2) and piston (3).
- Lubricate the two arms of the die set (4) (e. g. Gleitmo 746).
- Insert spring and piston.
- Insert head (5) and fasten finger tight.



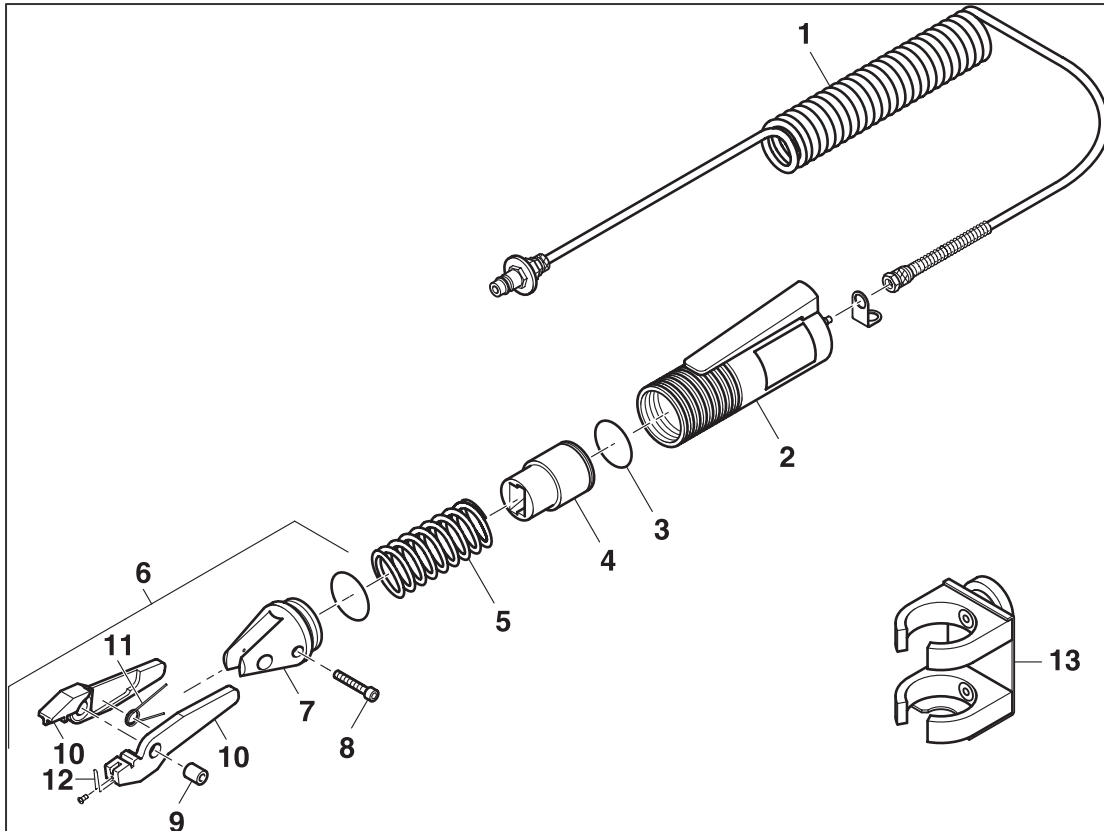
PC 24-14H SPARE PARTS

The following spare parts can be ordered by stating the corresponding part numbers.

Please contact American Electrical, Inc. at:

Phone: (804) 379-2899

Fax: (804) 379-8935



No.	Part	Article No.	No.	Part	Article No.
1	Compressed air tubing	2516	8	Hexagon socket screw	2504
2	Body	2508	9	Pivot pin	2503
3	Sealing ring	2520	10	Die set	2501
4	Piston	2507	11	Finger spring	2502
5	Spring	2506	12	Finger guard	2500
6	Head, complete	2540	13	Magnetic holder	DX
7	Head section	2505			

PC 24-14H

TECHNICAL DATA

Instrument Pneumatic Crimper
Crimping range 0.25 - 2.5 mm²
Press Form Trapezoid
Compressed-air connection min. 4 bar
..... max. 6 bar
Air consumption 0.2 l/Crimping at 5 bar
Dimensions (diameter x length x height)..... 44 x 190 mm
Weight..... approx. 450 g

Designation of the
equipment: Pneumatic Crimper

Machine type: PC 24-14H



Appropriate
EC Directive: 89/392/EEC

Harmonization
standard
used: EN292-1, EN292-2 "Safety of machinery"

AMERICAN ELECTRICAL, INC.
425 SOUTHLAKE BLVD.
SUITE NO. 9-B
RICHMOND, VA 23236

WWW.AMERICANELECTRICAL.COM

TELEPHONE: (804) 379-2899
FAX: (804) 379-8935

THE COPYRIGHT FOR THIS INSTRUCTION FOR USE BY AMERICAN ELECTRICAL,
INC.

NO PART OF THIS INSTRUCTION FOR USE MAY BE REPRODUCED, COPIED, OR
TRANSLATED WITHOUT PERMISSION.

© 2004 AMERICAN ELECTRICAL, INC.
RICHMOND, VA
USA